

Know All Men by these Presents, that the Model Land Company has caused to be surveyed and platted this

map of the subdivision of a part of the west one-half of Section Eighteen (18) of Township Fifty-seven (57) South, Range Thirty-nine (39) East and a part of the north-east quarter of the South East Quarter (N.E. 1/4 S.E. 1/4) of Section Thirteen (13) Township Fifty-seven (57) South Range Thirty-eight (38) East in Dade County, Florida to be known as Homestead, and hereby dedicates to the perpetual use of the public the Streets and Avenues shown thereon, reserving unto itself its successors and assigns the reversion or reversions thereof whenever discontinued by law.

Hereby Certify and Declare that this map of the subdivision of a part of the west one-half of Section eighteen (18) of Township Fifty-seven (57) South Range Thirty-nine (39) East, and a part of the north east quarter of the south-east quarter (N.E. 1/4 S.E. 1/4) of Section Thirteen (13) of Township Fifty-seven (57) South Range Thirty-eight (38) East in Dade County, Florida, is a true and correctly scaled described and subdivided plot as owned by the Madel Land Company and recently surveyed and platted by me in due conformity with the United States Government Survey of said land

J. S. Fredrick
Civil Engineer

Subscribed and sworn to before me this 1st day of May 1908
J. Jones
Notary Public

May 11 1908
of 144
Plats
J. J. Merrill
J. H. Gray
Seal

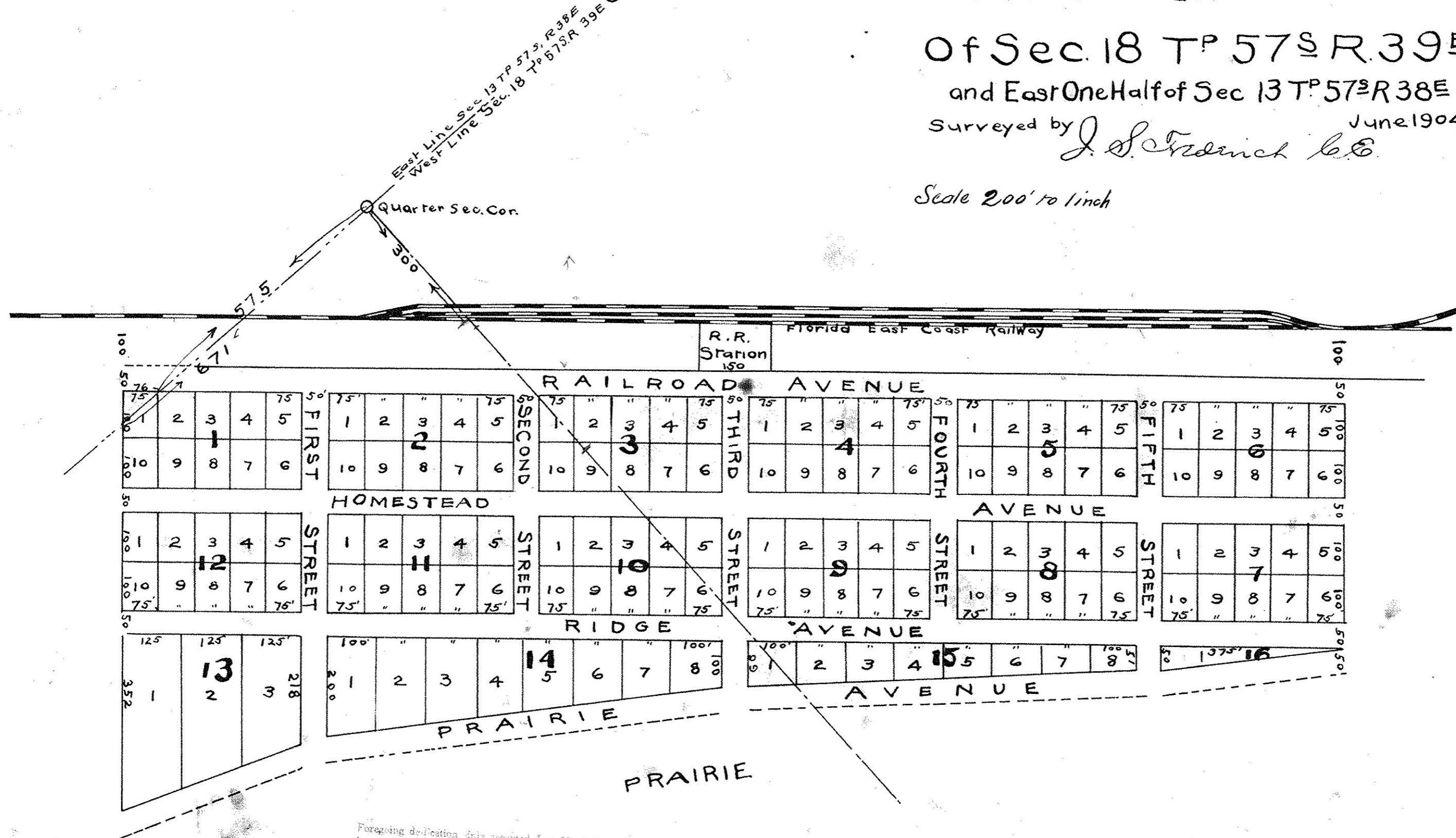
MAP OF HOMESTEAD

Dade County Fla.
In the West One Half

Of Sec. 18 T^P 57 S R. 39 E
and East One Half of Sec 13 T^P 57 S R 38 E

Surveyed by *J. S. Fredrick C.E.* June 1904

Scale 200' to 1 inch



Forgoing definition duly accepted Jan. 12, 1908
by Dade County, Fla., No. 1456, recorded O. R.
Bk. 1834, pg. 501, subject to conditions therein
stated. E. B. Leathersman, Clerk (SEAL).

Plat
B Plats 144
1st day of Sept 1911
E. B. Leathersman